

# PI Events

A monthly publication of news and views at Person Industries

October  
2009

Volume 12, Issue 10

## PI Expresses Appreciation at Annual Employee Banquet

The 2009 Employee Appreciation Banquet was held on Friday, September 18th at the Homestead Festival House. The banquet is an annual event to show appreciation to employees for their year of diligence at work. This year's banquet unexpectedly held a special moment for employees and staff alike.

After a delicious meal provided by the Homestead Staff, employees settled down to see the awards portion of the evening. It was then that PI Director Wanda Rogers introduced Person County Manager Heidi York to the gathering of employees, staff, family

members and friends. York, who recently completed her first year as Manager for Person County, told the group a little about herself, including the fact that she has a nine month old baby. "I can't get enough of her" York said. She continued on to say that when people invite her to events late in the evening, she usually does not accept because she is eager to spend time with her baby. However, to the

delight of the PI employees, York explained that she did make an exception so that she could attend the PI Banquet and express appreciation to the employees of PI for the outstanding job they have done this year. She noted the opening of the Person County Recycling Center as a major achievement and commended the employees for their exemplary work.



Heidi York, Person County Manager speaks to employees at annual banquet.

See page 2 for Award Winners

### Inside this issue:

EA Banquet Continued	2
Changes in Phase 2 Announced	2
Calendar of Events	2
Flu Shot Clinic Announced	2
Meet VR Newest Counselor Doris Gilmore	3
PI Prepares for H1N1	3
Words of Wellness	3
Grand Opening Cont.	4

## PCRC Hosts Grand Opening Celebration

The Person County Recycling Center held its Grand Opening Celebration on September 11 and 12, 2009. The Grand Opening was to be a two day event to make the community aware that the center is open and available for their recycling needs and to help the citizens take advantage of all it has to offer.

As the day of the Grand Opening approached, PI staff worried nervously about the turnout. Staff wondered if their great community awareness campaign was successful enough to inform and moti-

vate people to attend the event. And if they did attend, were there enough activities planned to engage and incite them to recycle. There were so many unknowns.

The ribbon cutting was scheduled to begin at 10:00 on Friday morning. Promptly at 9:30 a.m., the cars literally started rolling in. From 9:30 a.m. onward, for the entire two days of the event, PI staff and other event organizers were engulfed in the mass of humanity that came to the "see how it works". As those attending the ribbon cutting flowed into



Mayor Tom Brown officially starts the PCRC Grand Opening with a remembrance of the victims of 9/11. Doris Carver, RACC Board Chair and Johnny Lunsford, Chairman of PCBOCC look on.

Continued on page 6

### Recycling Center changes operating hours:

The Recycling Center is always open!

Attendants are available during the following hours:

Mon—Fri	7:30 a.m.—5:00 p.m.
Sat	8:00 a.m.—2:00 p.m.
Sun	Closed

When attendants are not available, recyclables may be dropped in the brown bins at the drop off area of PCRC. We do ask that you separate paper and cardboard from glass, plastics and cans and place in the corresponding bins.

## PI Expresses Appreciation at Annual Employee Banquet

Continued from page 1



**Attendees gather to listen to Awards Ceremony**

Attendance at the banquet was the lowest on record due to employee layoffs that occurred earlier in the year. Even so, some 140 people turned out for this evening of appreciation.

PI Director Wanda Rogers also noted how exceptional her employees and staff have been as they started the year knowing very little about recycling and are now operating a MRF.

To recognize those who were particularly outstanding, awards were given. (See box to right.)

The evening concluded with dancing provided by DJ John Williford. PI thanks all who came and supported the evening.

### Outstanding Productivity Award Winners



**Bradley Villines, PI Main**

Awarded for enormous flexibility



**Carlos Cervantes, Person County Recycling Center**

Carlos showed outstanding initiative as PI transitioned from PI Mfg to PCRC. His versatile skills now make him the "go to guy" at PCRC.



**Anthony Shane Cameron, Director's Achievement Award**

Award given each year to someone who has shown great improvement and overcome great challenges to meet personal/vocational goals.



**William Powell, Community Contracts**

William was awarded for his positive attitude and willingness to take on any task assigned, working at three of the five PI work sites.

## PCRC Announces Changes for Phase 2 of Material Acceptance

Phase 2 of the Recycling Material Acceptance was originally scheduled to begin on October 1, 2009 with the acceptance of automotive oil, oil filters, batteries fluorescent light bulbs and scrap metal.

However, research on the recycling/disposal of the materials shows a cost that PCRC finds prohibitive at this time. As October 1 approaches, the Person County Recycling Center is making a change in

Phase 2 of the material acceptance. As of October 1, 2009, scrap metal and oil filters will be accepted as originally scheduled but with a 25 cents fee for oil filters. The acceptance of fluorescent

bulbs, batteries and pesticide containers has been postponed until January 1, 2010. Phase 3, originally scheduled to begin January 1, 2010 has been delayed to May 1, 2010.

## October 2009 Disability Awareness Month

Sun	Mon	Tue	Wed	Thu	Fri	Sat
				1 PCRC Phase 2 (see above for details)	2	3
4	5	6	7	8	9	10
11	12 Columbus Day	13	14	15	16 Tootsie Roll Drive (see page 3 for details) Boss' Day	17
18	19	20	21 Flu Shot Clinic (see right for details)	22	23	24
25	26	27	28	29	30	31 Halloween

## Flu Shot Clinic Announced

Person County Government will hold a Flu Shot Clinic on Wednesday, October 21, 2009 at the Person County Office Building Auditorium from 9:00 a.m. to 12:00 p.m. and on Tuesday, October 27 from 1:00 p.m. to 4:00 p.m.

The shots will be for the regular flu only, not the H1N1, and will be done only for Wellpath card holders and their adult dependents. Please bring a photo ID and your Wellpath insurance card to access the clinic.



**People With Disabilities at Work**  
 People with disabilities help sort paper at the Person County Recycling Center (front) and work on materials sort line (back). PI employs more than 100 people with disabilities to meet the demands of our many customers.

## October is Disability Awareness Month

Congress designated each October as National Disability Employment Awareness Month (NDEAM). The Office of Disability Employment Policy has the lead in planning NDEAM activities and materials to increase the public's awareness of the contributions and skills of American workers with disabilities. Various programs carried out throughout the month also highlight the specific employment barriers that still need to be addressed and removed.

This effort to educate the

American public about issues related to disability and employment actually began in 1945, when Congress enacted a law declaring the first week in October each year "National Employ the Physically Handicapped Week." In 1962, the word "physically" was removed to acknowledge the employment needs and contributions of individuals with all types of disabilities. In 1988, Congress expanded the week to a month and changed the name to "National Disability Employment Awareness Month."

Person Industries primarily employs people with disabilities to meet production and other service delivery demands from our customers in the Roxboro community. In the 2009 Fiscal Year, PI opened the Person County Recycling Center, one of a few materials recovery facilities in the state that is run with labor from persons with disabilities. This operation and others performed over PI's nearly 25 years of service, leave us convinced that hiring people with disabilities is a major advantage for employers.

## McArthur Shows Honesty is Best Policy



**McArthur Edwards**

The Recycling Center has created new jobs for the employees of PI. Each day, a crew of employees is transported to PCRC to work as sorters and greeters in the recycling facility. But what many people do not know is that a crew of people works as paper sorters at the PI Main location. All paper delivered for recycling is sorted at PI Main by people like McArthur Edwards.

As a sorter, McArthur has to

separate paper into different bins for office paper, mixed paper and newspapers. Envelopes, considered office paper are opened so that the contents can be further sorted. It was during this process that McArthur opened an envelope and discovered money. Hmmm... he no doubt wondered. Should he keep it or turn it in? Well, McArthur did not deliberate long on the matter and turned in the \$58 to his supervisor. This turned

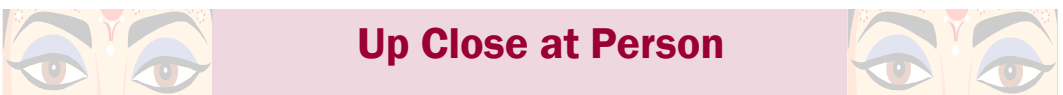
out to be a life saver because the owner of the money was located by the name on the envelope and was ecstatic to have the money returned as it was part of a Southern Middle School Fundraiser.

McArthur was extremely proud of himself for both the find and the fine moral example. So were we. Thanks Mac for proving the old adage to continue to be true—honest is the best policy.

## Knights of Columbus Hold Tootsie Roll Drive

The Knights of Columbus will hold a Tootsie Roll Drive on Friday, October 16 at the Wal-Mart Shopping Center. PI will participate in the drive from 10:00 a.m. to 3:00 p.m.

Proceeds from the Tootsie Roll Drive are given to programs serving people with disabilities in Person County.



## Up Close at Person

- **PI sends condolences to Shelia Long and family for the loss of husband and father, Raybon Long. Shelia, PI Habilitation Assistant, had taken Family and Medical Leave to care for Ray. He died on Wednesday, September 23rd after an extended illness.**
- **PI sends condolences to PI Program Participant Jay Rogers and family on the loss of his mother, Ms. Louise Rogers. Ms. Rogers died on Wednesday, September 30, 2009 after an extended illness. Prior to her illness, Ms. Rogers was regularly seen at PI and was known as a very supportive parent.**

## Looking Ahead for Holiday Planning

As the 2009 holiday season approaches, PI is looking ahead to make employees aware of the holiday schedule. At the present time, PI plans to close the main location at 601 N. Madison Boulevard during the Christmas Holiday season. Employees who report to PI Main only and do not work at the recycling center will not

have to report to work from December 24, 2009—January 3, 2010. (See right for PCRC Holiday Schedule.)

PATS will not run after December 23rd. Employees who work at PCRC must make their own transportation arrangements to and from work each day.

### November 2009—PI Main

Sun	Mon	Tue	Wed	Thu	Fri	Sat
1	2	3	4	5	6	7
8	9	10	11 <i>Holiday Closed</i>	12	13	14
15	16	17	18	19	20 <i>Stew Sale</i>	21
22	23	24	25	26 <i>Holiday Closed</i>	27 <i>Holiday Closed</i>	28
29	30					

### December 2009—PI Main

Sun	Mon	Tue	Wed	Thu	Fri	Sat
		1	2	3	4	5
6	7	8	9	10	11	12
13	14	15	16	17	18	19
20	21	22	23 <i>Employee Christmas Party</i>	24 <i>Holiday Closed</i>	25 <i>Holiday Closed</i>	26
27	28 <i>Furlough Closed</i>	29 <i>Holiday Closed</i>	30 <i>Holiday Closed</i>	31 <i>Holiday Closed</i>		

## Person County Recycling Center Holiday Schedule

- Thursday, December 24, 2009—Closed
- Friday, December 25, 2009 —Closed
- Saturday, December 26, 2009—Open
- Monday—December 28, 2009—Closed for Person County Furlough
- Tuesday—Thursday, December 29—31, 2009—Open
- January 1, 2010—Closed
- January 2, 2010—Open

## Person County Government Employees Take Another Furlough Day

Monday, December 28, 2009 is designated a furlough day for all personnel. No employee should report to work on that day or use any leave.

## PI is Cooking a Stew

The PI stew makers are gearing up for another stew sale.

**Date:** November 20, 2009

**Time:** 11:30 a.m.—4:00 p.m.

**Location:** PCRC

**Price:** \$6.00 per quart

**Bowl:** \$3.50

## Meet VR's Newest Counselor in Roxboro

Even though she is the new VR counselor for the high school case load, Doris Gilmore is a familiar face to many of us.

Doris was an intern in the Roxboro office last Spring while completing her Masters of Rehabilitation Counseling and Psychiatric Certification from the University of

South Carolina. Doris did such a great job as Intern that VR hired her permanently.

Doris' path to Rehabilitation Counseling is an interesting one—she started out as a VR client! She had been injured and was unable to work. She saw a documentary about a professor who is wheelchair bound and still teaches classes everyday. The professor's tenacity and success

inspired Doris to reach beyond the limitations of her own disability and return to school to begin a new career. Now she

is reaping the rewards of her hard work and benefitting both herself and Roxboro's VR clients.

Doris was born and raised in South Carolina and Georgia. She is married to Timothy Gilmore, who is a pastor and security

guard. Doris enjoys singing and playing drums at her church. She is very pleased to be living and working in Roxboro. She says that Roxboro reminds her of her own hometown—quiet and friendly. Doris said "People here are wonderful—we work together as a team and get along great!" Person Industries welcomes Doris to our Vocational Rehabilitation team.



Doris Gilmore  
VR Counselor

## PI Prepares for H1N1

Flu season has arrived and to the concern of many flu experts, it arrived too early. This seems to indicate a busy flu season.

To prepare for this, the PI Management Team has met to see how PI policies need to be changed to accommodate employee illnesses. The team decided to relax the attendance policy if someone is out due to the flu, provided any previous leave has not been abused. Employees may be asked to bring a doctor's note

to return to work or to verify reason for absence from work.

The team also requested that employees with the flu or flu-like symptoms stay out of work for at least two days after the fever is gone. This is one day beyond the recommendations of the Center for Disease Control. Employees are also strongly encouraged to practice good hand washing and to use the hand sanitizer located throughout both PI locations.

## Words of Wellness



Leigh Ann Creson,  
Health Promotion  
Coordinator  
Person County

Person County Health Department is giving the seasonal flu shot Monday-Thursday from 8:00 a.m. - 4:00 p.m. (except from noon-1:00 p.m.) and on Friday from 8:00 a.m. until noon. The Health Department is located within the Person County Human Services Building (the old Wal-Mart), 355-A South Madison Boulevard. The seasonal flu shot is available for all individuals. It is free to Medicare and Medicaid participants and for children under the age of 18. Parents are especially encouraged to get their children immunized if they are considered to be "high risk". The following categories define what is meant by "high risk":

- Children ages 6 months to 59 months.
- Children who have chronic disorders of the pulmonary or cardiovascular systems, including asthma.
- Children and adolescents (aged 6 months to 18 years) who are receiving long-term aspirin therapy and, therefore, might be at risk for experiencing Reye syndrome after influenza infection.
- Children who have required regular medical follow-up or hospitalization during the preceding year because of chronic metabolic diseases (including diabetes mellitus), renal dysfunction, hemoglobinopathies, or immunodeficiency (including immunodeficiency caused by medications or by HIV).
- Children who have any condition (e.g., cognitive dysfunction, spinal cord injuries, seizure disorders, or other neuromuscular disorders) that can compromise respiratory function or the handling of respiratory secretions, or that can increase the risk for aspiration.

The seasonal flu shot is recommended for all adults, especially those who are:

- Healthcare personnel.
- Persons ages 50 years and older.
- Women who are pregnant.
- Persons who have chronic pulmonary (including asthma), cardiovascular, renal, hepatic, cognitive, neurological/neuromuscular, hematological or metabolic disorders including diabetes mellitus.
- Persons who are immunocompromised.
- Residents of nursing homes and other long-term care facilities.
- Household contacts and caregivers of children less than 5 years of age and adults ages 50 years and older.

Medicare and Medicaid recipients are encouraged to bring their cards with them. There will be a \$30.00 charge for all others. No appointment is needed. If you have any questions, please call the health department at 336-597-2204.

## Person Industries

601 N. Madison Boulevard  
Roxboro, NC 27573  
Phone: 336-599-7571  
Fax: 336-597-2834  
E-mail: [vwilkerson@personcounty.net](mailto:vwilkerson@personcounty.net)



*People investing in people*

[www.personindustries.com](http://www.personindustries.com)

## PCRC Hosts Grand Opening Celebration

Continued from page 1

the center for tours, others from the public came, primarily from Person County but also from the surrounding communities of Caswell and Granville Counties as well. Bus loads from Person County Schools came to tour and have their questions answered. Parents of students came to support their children and also toured. Representatives from business, industry, county departments and local government showed outstanding support by coming.

As each person was thanked for coming, they were heard to say things like, "this is wonderful. I can't believe we have something like this in Person County." Others said, "I didn't know so many things could be recycled" or "I was already recycling but now I can recycle a lot more."

All in all, it was an invigorating two days of activities that left staff physically exhausted but extremely gratified for the outstanding interest in the Person County Recycling Center.

## What they said about our Grand Opening

*"Everything was really nice and kudos to PI! I was impressed and think this new venture is a great one for our county."*

*"I must tell you I was so inspired after my tour of the recycling center that I went to Wal-Mart on Saturday and bought a bin that is now set up in my utility room just for recyclables."*

*LeighAnn Creson*

*"Your Person Industries newsletter looks great as well as relaying good info about Person Industries. Congratulations on the ...Recycling Center. It will help all of Person County."*

*Debra Harlow*

## Grand Opening Gets Underway with Ribbon Cutting Ceremony



### The Ribbon Cutting

(L to R) Commissioners Ray Jeffers, Jimmy Clayton, Johnny Lunsford, RACC Board Chair Doris Carver, Commissioner Sam Kennington, PC Pride Member Francis Blalock, PI Director Wanda Rogers, PC Assistant

The Ribbon Cutting was the kickoff event of the Grand Opening of the Person County Recycling Center. The ribbon cutting, a function of the Roxboro Area Chamber of Commerce, featured Roxboro Mayor Tom Brown who first gave a fitting reminder that it was 9/11 and encouraged the crowd to observe a moment of silence for the victims of the terrorist act on 9/11/01. Mayor Brown then expressed his appreciation for the center, citing his pleasant experiences in using the center and encouraged others to become recyclers.

Johnny Lunsford spoke next and expressed his appreciation to PI for establishing this much needed service in the county. Lunsford, who has often said PI is the best kept secret in Person County, expanded the accolade to best kept secret in the State.

NC Representative Winkie Wilkins concluded the list of guest speakers by sharing his personal experiences with recycling. An avid recycler, Mr. Wilkins recalled a little known recycling fact that Person County started recycling in 1976 by collecting newspapers, which were then transported to another city for recycling. Wilkins too shared his positive experiences in dealing with the employees of PI at the recycling center and also when they attend the Coalition Rally Day that occurs each year in the state capital.

Wanda Rogers then accepted the plaque, presented by Doris Carver, Chair of the Board of the Roxboro Area Chamber of Commerce (RACC). Rogers thanked everyone who made the center a reality, starting with the Person County Commissioners, County Manager Heidi York, PC Pride and the staff of PI. Rogers said a special thank you to Assistant County Manager Paul Bailey who she felt to be invaluable during the startup process. Bailey was also on hand to help receive the plaque. Rogers thanked the individuals and organizations that helped plan and sponsor the Grand Opening Celebration—Marcia O'Neill, President and CEO of RACC, Republic, Classic Food Services, Pepsi Cola Bottling Co., Costco and PC Pride. She also thanked the PCRC vendors who sat up booths at the event to show the public the end use of recycled materials.

Rogers then turned to her staff and employees for a verbal rendition of the recycling tag line—MAKE A DIFFERENCE, RECYCLE PERSON COUNTY!